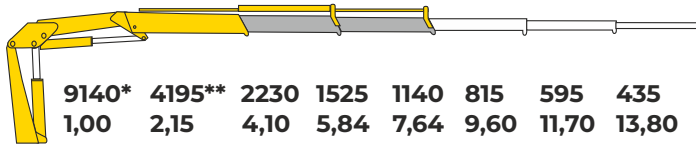




## HB 100 E2

Kg	9140*	4195**	2230	1525	1140	815	595	435
m	1,00	2,15	4,10	5,84	7,64	9,60	11,70	13,80



\*) Theoretical lifting capacity, \*\*) Fixed hook Capacity

**EES**  
EXTRA EXTENSION SPEED

MODELS	LIFTING MOMENT	MAX VERTICAL REACH (HYDR)	SLEWING ANGLE	SLEWING TIME	MAX WORKING HEEL	WORKING PRESSURE	CRANE WEIGHT WITHOUT STABILIZERS	OIL TANK CAPACITY	OIL FLOW	DIMENSIONS
	tm	m	°	s/180°	°	bar	Kg	l	l/min	mm B x H x S
HB100 E2	-	11,30	395	17	4	290	1185	60	25	2480X2170X640



Building



Construction



Oil&Gas



Mining



Rental



Logistic



Gardening



Power station



Maintenance



Waste handling