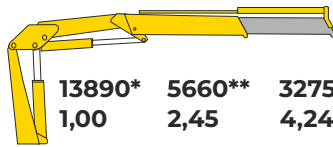




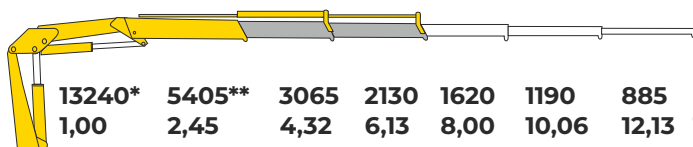
HB 150 E1

Kg	13890*	5660**	3275	2275
m	1,00	2,45	4,24	6,04



HB 150 E2

Kg	13240*	5405**	3065	2130	1620	1190	885	610
m	1,00	2,45	4,32	6,13	8,00	10,06	12,13	14,32



EES
EXTRA EXTENSION SPEED

MODELS	LIFTING MOMENT	MAX VERTICAL REACH (HYDR)	SLEWING ANGLE	SLEWING TIME	MAX WORKING HEEL	WORKING PRESSURE	CRANE WEIGHT WITHOUT STABILIZERS	OIL TANK CAPACITY	OIL FLOW	DIMENSIONS
	tm	m	°	s/180°	°	bar	Kg	l	l/min	mm B x H x S
HB150 E1	13,9	9,6	380	17	4	290	1470	100	25	2460X2340X885
HB150 E2	-	11,5	380	17	4	290	1600	100	25	2460X2340X885



Building



Construction



Oil&Gas



Mining



Rental



Logistic



Gardening



Power station



Maintenance



Waste handling