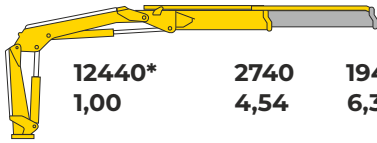




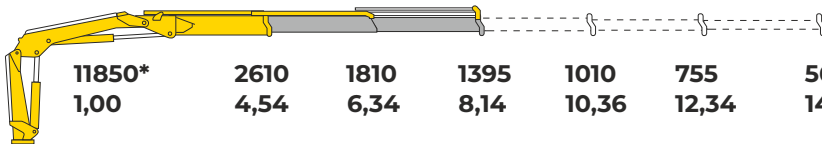
HB 130 E1

Kg	12440*	2740	1940
m	1,00	4,54	6,34



HB 130 E2

Kg	11850*	2610	1810	1395	1010	755	560
m	1,00	4,54	6,34	8,14	10,36	12,34	14,39



EES
EXTRA EXTENSION SPEED

SDS
SMOOTH DESCENT SYSTEM

MODELS	LIFTING MOMENT	MAX VERTICAL REACH (HYDR)	SLEWING ANGLE	SLEWING TIME	MAX WORKING HEEL	WORKING PRESSURE	CRANE WEIGHT WITHOUT STABILIZERS	OIL TANK CAPACITY	OIL FLOW	DIMENSIONS
	tm	m	°	s/180°	°	bar	Kg	l	l/min	mm B x H x S
HB130 E1	12,4	9,9	425	20	4	285	1335	130	30	2480X2295X825
HB130 E2	-	11,7	425	20	4	285	1445	130	30	2480X2295X825



Building



Construction



Oil&Gas



Mining



Rental



Logistic



Gardening



Power station



Maintenance



Waste handling